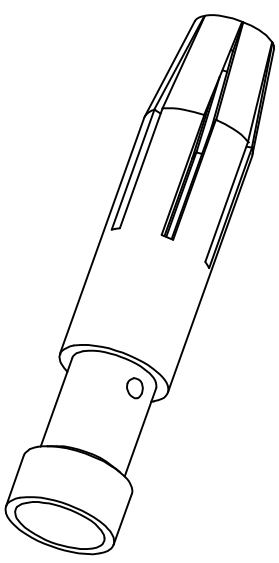
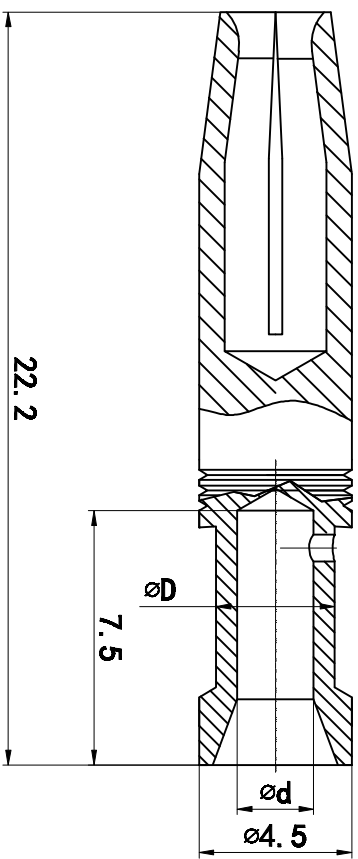
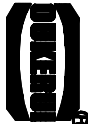


表面鍍銀	表面鍍金	Wire gauge	φ	D
CE5F-0.37	CEGF-0.37	0.14-0.37 mm <sup>2</sup>	AWG 26-22	0.90
CE5F-0.5	CEGF-0.5	0.5 mm <sup>2</sup>	AWG 20	1.10
CE5F-0.75	CEGF-0.75	0.75 mm <sup>2</sup>	AWG 18	1.30
CE5F-1.0	CEGF-1.0	1.0 mm <sup>2</sup>	AWG 18	1.45
CE5F-1.5	CEGF-1.5	1.5 mm <sup>2</sup>	AWG 16	1.75
CE5F-2.5	CEGF-2.5	2.5 mm <sup>2</sup>	AWG 14	2.25
CE5F-3.0	CEGF-3.0	3.0 mm <sup>2</sup>	AWG 12	2.55
CE5F-4.0	CEGF-4.0	4.0 mm <sup>2</sup>	AWG 12	2.85
				3.9

REVISION DATA		
SYM	DESCRIPTION	DATE



Tolerance	SIGNATURE	DATE	Units	mm	PART NAME: HZW-16A-FC(冷压公插针)
0~≤6 ±0.03	DRAW		Size	A4	 宁波科瑞连接器有限公司 NINGBO QIKERI CONNECTOR CO., LTD.
6~≤20 ±0.06	DESIGN		Scale	1.5:1	
20~≤50 ±0.10	CHECK		Sheet	1/1	
50~≤80 ±0.20	APPROVE		Proj.		Drawing NO.
					Material
					REV
					A